

BLOCH EXECUTIVE EDUCATION

BLOCH EXECUTIVE EDUCATION

I.



II.

A.

a.

B.

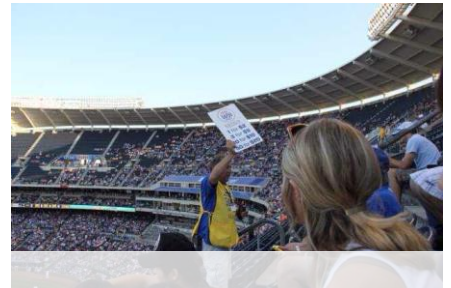
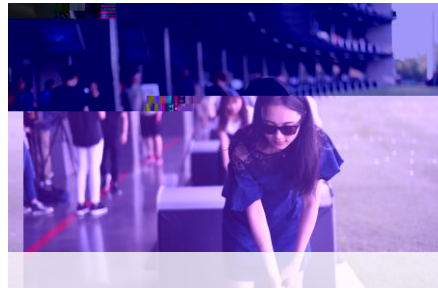
BLOCH EXECUTIVE EDUCATION

C.

D. GPA > 2.5 (4)



-
-
-
-
-
-
-
-



BLOCH EXECUTIVE EDUCATION

III.

A.

-
- 9 20 3 31
- 3 15 / -6000
- 4
- 5 (J)
- 30

B.

- - a.
 - b. \$800-\$1000
-
- UMKC
-
-

IV.

BLOCH EXECUTIVE EDUCATION

V.

A. \$4950

\$2100

B.

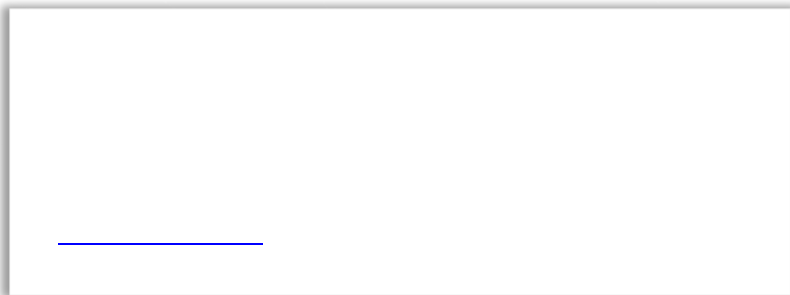
i	a	i i
	<hr/>	

a

BLOCH EXECUTIVE EDUCATION

-
-
-
-

E : 2



BLOCH EXECUTIVE EDUCATION



